



Museum of Fine Arts Boston mfa.org

Contact: Sarah Drumm
sdrumm@mfa.org

Art of Ancient Greece, Rome and the Byzantine Empire
Opening December 18, 2021



1. Statue of Athena Parthenos (the Virgin Goddess), 2nd or 3rd century C.E.
"Gods and Goddesses" Gallery



2. Mosaic with personifications of Pleasure and Wealth, 6th century C.E.
"Byzantine Art" Gallery



3. Architrave relief from the Temple of Athena at Assos with a scene of Herakles and Centaurs, about 540–525 B.C.E.
"Early Greek Art" Gallery



4. Statuette of Eros wearing the lionskin of Herakles, late 1st century B.C.E. – early 1st century C.E., the Diphilos' workshop, "Gods and Goddesses" Gallery



5. Mantiklos "Apollo," about 700–675 B.C.E. "Early Greek Art" Gallery



6. Seated dancer, late 4th century C.E. "Byzantine Art" Gallery



7. Priestess burning incense, about 125–130 C.E. "Roman Portraiture" Gallery



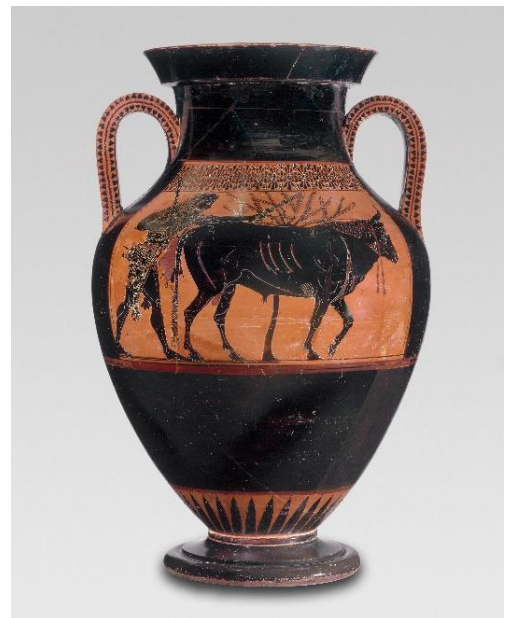
8. Statue of Herakles, about 1st century B.C.E. – 1st century C.E. "Gods and Goddesses" Gallery



9. Three-sided relief with a scene of weighing ("the Boston Throne"), about 460 B.C.E.
"Gods and Goddesses" Gallery



10. Mixing bowl (bell krater) with the death of Aktaion and a pursuit scene, about 470 B.C.E., the Pan Painter
"Gods and Goddesses" Gallery



11. Two-handled jar (amphora) with Herakles driving a bull to sacrifice, about 525–520 B.C.E., the Andokides Painter
"Early Greek Art" Gallery



12. Head of Aphrodite ("The Bartlett Head"), about 330–300 B.C.E.
"Gods and Goddesses" Gallery



13. Bust of a man, 1st century B.C.E.
"Roman Portraiture" Gallery



14. Rhyton in the form of an Amazon riding a horse,
about 440 B.C.E., Sotades
"Early Greek Art" Gallery



15. Portrait of an empress, possibly Fausta, 300–325
"Byzantine Art" Gallery



16. Medallion with bust of Zeus and chain,
late 2nd century C.E.
"Gods and Goddesses" Gallery



17. Solidus of Justinian II with bust of Christ, 692–695 C.E.
"Byzantine Art" Gallery



18. Libation bowl (phiale mesomphalos), about 625 B.C.E.
"Early Greek Art" Gallery



19. Spherical small container (pyxis) with representations of Christ, Virgin
and two archangels, 6th–7th century C.E.
"Byzantine Art" Gallery

PLEASE READ BEFORE OPENING
MUSEUM OF FINE ARTS, BOSTON – TERMS AND CONDITIONS OF IMAGE USE

The enclosed images are provided to you solely for your one time use to illustrate original news stories or educational articles written and published about Art of Ancient Greece, Rome and the Byzantine Empire, opening on December 18, 2021. Please return or destroy these materials after this time.

By opening the attached files and accessing these materials you agree that you will make no use of the enclosed images inconsistent with these restrictions:

** You will not provide the enclosed images, or any copies or derivative versions of these images, to any third party other than as necessary to publish stories and articles as described above.*

** No cropping, overprinting, bleeding, tinting, reversing, or any other type of manipulation of the images is permitted.*

** All object information listed below should be printed with any reproduction of the corresponding, attached/enclosed images.*

You are required to print the asterisked [] credit lines specified in the image descriptions adjacent to the corresponding image. If you do not accept the above terms and restrictions, please do not open the attached files and immediately return them to the Public Relations Department, Museum of Fine Arts, Boston, 465 Huntington Ave., Boston, MA 02115, (617) 267–9300.*

1. Statue of Athena Parthenos (the Virgin Goddess)
2nd or 3rd century C.E.
Marble from Mt. Pentelikon near Athens
* Classical Department Exchange Fund
* Photograph © Museum of Fine Arts, Boston
2. Mosaic with personifications of Pleasure and Wealth
6th century C.E.
Stone and glass tesserae
* Gift of George D. and Margo Behrakis
* Photograph © Museum of Fine Arts, Boston
3. Architrave relief from the Temple of Athena at Assos with a scene of Herakles and Centaurs
about 540–525 B.C.E.
Andesite
* Gift of the Archaeological Institute of America
* Photograph © Museum of Fine Arts, Boston
4. Statuette of Eros wearing the lionskin of Herakles
the Dipilos' workshop
late 1st century B.C.E. – early 1st century C.E.
Terracotta
* Henry Lillie Pierce Fund
* Photograph © Museum of Fine Arts, Boston
5. Mantiklos "Apollo"
about 700–675 B.C.E.
Bronze
* Bartlett Collection—Museum purchase with funds from the Francis Bartlett Donation of 1900
* Photograph © Museum of Fine Arts, Boston
6. Seated dancer
late 4th century C.E.
Silver with gold details
* Frederick Brown Fund
* Photograph © Museum of Fine Arts, Boston

7. Priestess burning incense
about 125–130 C.E.
Marble, from the Greek island of Paros
* Bartlett Collection—Museum purchase with funds from the Francis Bartlett Donation of 1912
* Photograph © Museum of Fine Arts, Boston
8. Statue of Herakles
about 1st century B.C.E. – 1st century C.E.
Bronze
* Catharine Page Perkins Fund
* Photograph © Museum of Fine Arts, Boston
9. Three-sided relief with a scene of weighing ("the Boston Throne")
about 460 B.C.E.
Marble, Dolomitic from the Greek island of Thasos
* Henry Lillie Pierce Fund
* Photograph © Museum of Fine Arts, Boston
10. Mixing bowl (bell krater) with the death of Aktaion and a pursuit scene
the Pan Painter
about 470 B.C.E.
Ceramic, Red Figure
* Julia Bradford Huntington James Fund and Museum purchase with funds donated by contribution
* Photograph © Museum of Fine Arts, Boston
11. Two-handled jar (amphora) with Herakles driving a bull to sacrifice
the Andokides Painter
about 525–520 B.C.E.
Ceramic, Black Figure and Red Figure (Bilingual)
* Henry Lillie Pierce Fund
* Photograph © Museum of Fine Arts, Boston
12. Head of Aphrodite ("The Bartlett Head")
about 330–300 B.C.E.
Parian marble
* Bartlett Collection—Museum purchase with funds from the Francis Bartlett Donation of 1900
* Photograph © Museum of Fine Arts, Boston
13. Bust of a man
1st century B.C.E.
Terracotta
* Museum purchase with funds donated by contribution
* Photograph © Museum of Fine Arts, Boston

14. Rhyton in the form of an Amazon riding a horse
Sotades
about 440 B.C.E.
Ceramic, Red Figure
* Harvard University—Boston Museum of Fine Arts Expedition
* Photograph © Museum of Fine Arts, Boston
15. Portrait of an empress possibly Fausta
300–325
Marble from Göktepe, Turkey (near Aphrodisias)
* William E. Nickerson Fund
* Photograph © Museum of Fine Arts, Boston
16. Medallion with bust of Zeus and chain
late 2nd century C.E.
Silver
* Theodora Wilbour Fund in memory of Zoë Wilbour
* Photograph © Museum of Fine Arts, Boston
17. Solidus of Justinian II with bust of Christ
692–695 C.E.
Gold
* Anonymous gift in memory of Zoë Wilbour (1864–1885)
* Photograph © Museum of Fine Arts, Boston
18. Libation bowl (phiale mesomphalos)
about 625 B.C.E.
Gold
* Bartlett Collection—Museum purchase with funds from the Francis Bartlett Donation of 1912
* Photograph © Museum of Fine Arts, Boston
19. Spherical small container (pyxis) with representations of Christ, Virgin and two archangels
6th–7th century C.E.
Silver with gilding
* Gift of George D. and Margo Behrakis in honor of John J. Herrmann, Jr., Curator of Classical Art, 1976-2004
* Photograph © Museum of Fine Arts, Boston

###